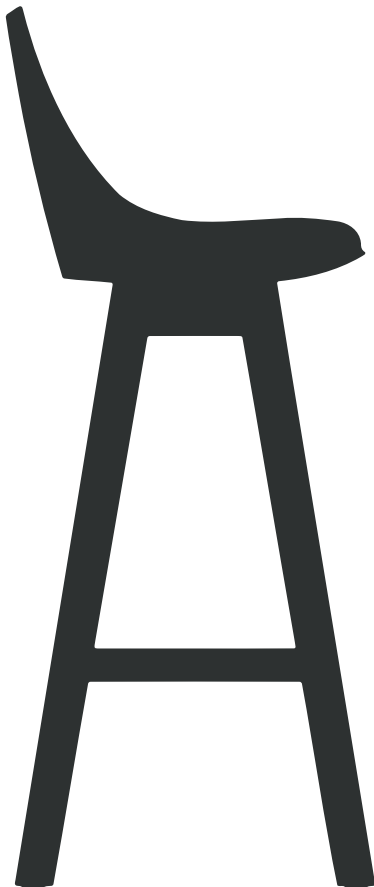


Knight®

Product Details

Luna Barstool



Luna Barstool



FEATURES

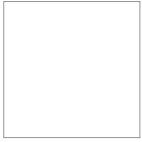
- Flexible polypropylene mono-shell
- Seat cushion upholstered in a range of fabric choices
- Solid oak frame with footrest
- Pair with Cubit, Anvil, Polo or Metallum bar leaners

The Luna Barstool brings the same modern-retro style of the Luna chair into higher seating settings. With its sculpted polypropylene shell, cushioned seat, and solid oak base, it offers both comfort and sophistication at bar height. Available in black or white shells and a wide choice of fabric finishes, the Luna Barstool is a versatile piece that enhances breakout spaces, cafés, and collaborative areas with warmth and style.



FINISHES

SHELL

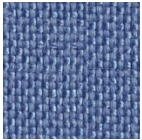


WHITE

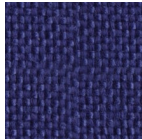


BLACK

CROWN



FRESHWATER



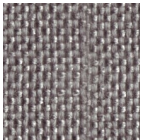
ELECTRIC



INDIGO



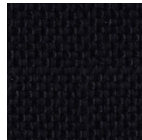
MIDNIGHT



RIVERSTONE



GALAXY



EBONY

BREATHE



TOMATO RED



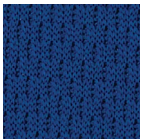
LIME GREEN



FERN GREEN



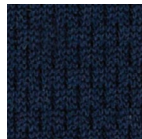
BABY BLUE



SKY BLUE



ROYAL BLUE



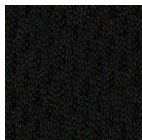
NAVY



ALLOY GREY



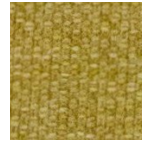
SLATE GREY



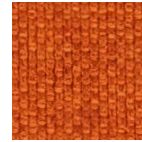
BLACK

Please note that the warranty does not apply to fabric, mesh & textiles.

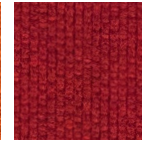
SPLICE



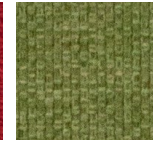
YELLOW



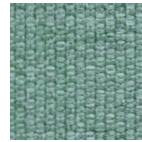
ORANGE



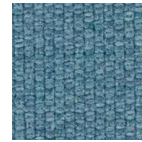
RED



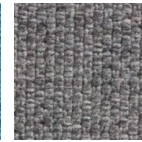
GREEN



LAGOON



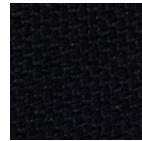
BLUE



GREY



CHARCOAL

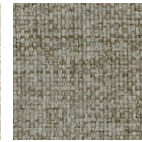


BLACK

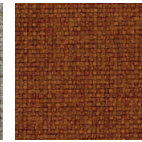
REEF



NATURAL



WALNUT



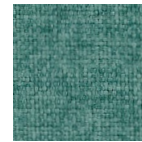
FENNEL SEED



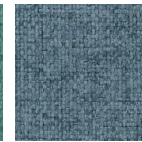
RED



PALM



EGG BLUE



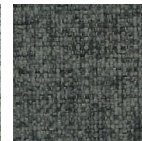
BLUE



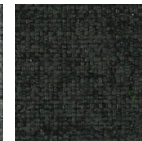
STEEL BLUE



GREY MIST

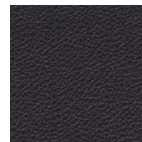


PEWTER

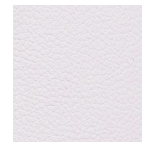


BLACK

PU



BLACK



WHITE

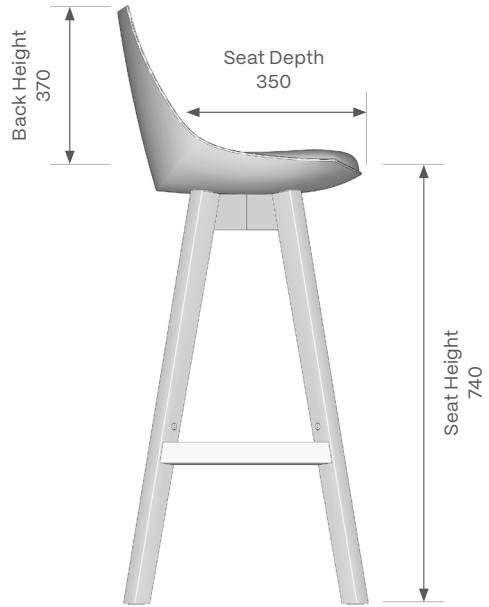
DIMENSIONS (MM)

Seat H	740
Seat W	410
Seat D	350
Back H	370
Overall H	1000

OPTIONAL UPGRADES

Custom Fabric 0.5m required

DIMENSIONS (MM)



Smarter Workspaces

NEW PLYMOUTH
Head Office/Showroom
59 Rimu Street
New Plymouth 4312

AUCKLAND
Showroom
Appointment only

0800 143 143
info@knightgroup.co.nz