

Knight®

Product Details

Luna Chair



Luna Chair



FEATURES

- Flexible polypropylene mono-shell
- Seat cushion upholstered in a range of fabric choices
- Solid oak frame

The Luna is a beautifully crafted chair that combines modern style with a hint of retro charm. With its sculpted polypropylene shell, cushioned seat, and solid oak frame, it's designed to bring comfort and character to meeting areas, breakout spaces, and informal zones. Available in black or white shells and a wide choice of fabrics, the Luna adds warmth, versatility, and a touch of personality to the workplace.



15 YEAR
WARRANTY



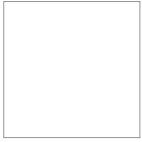
100 KG
RATING



3+ HOUR
COMFORT

FINISHES

SHELL

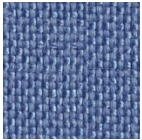


WHITE

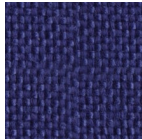


BLACK

CROWN



FRESHWATER



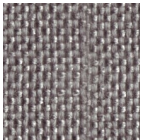
ELECTRIC



INDIGO



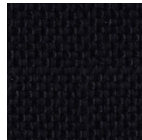
MIDNIGHT



RIVERSTONE



GALAXY



EBONY

BREATHE



TOMATO RED



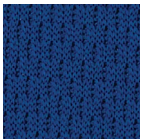
LIME GREEN



FERN GREEN



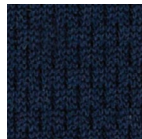
BABY BLUE



SKY BLUE



ROYAL BLUE



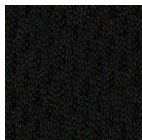
NAVY



ALLOY GREY



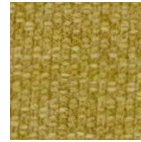
SLATE GREY



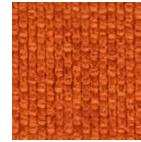
BLACK

Please note that the warranty does not apply to fabric, mesh & textiles.

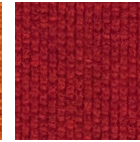
SPLICE



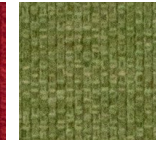
YELLOW



ORANGE



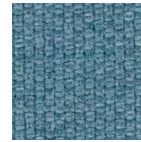
RED



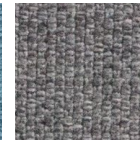
GREEN



LAGOON



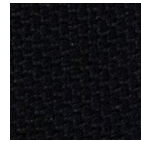
BLUE



GREY



CHARCOAL

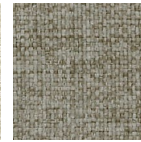


BLACK

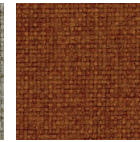
REEF



NATURAL



WALNUT



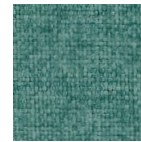
FENNEL SEED



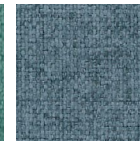
RED



PALM



EGG BLUE



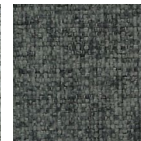
BLUE



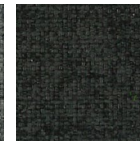
STEEL BLUE



GREY MIST

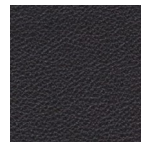


PEWTER

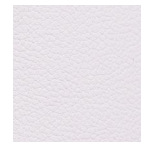


BLACK

PU



BLACK



WHITE

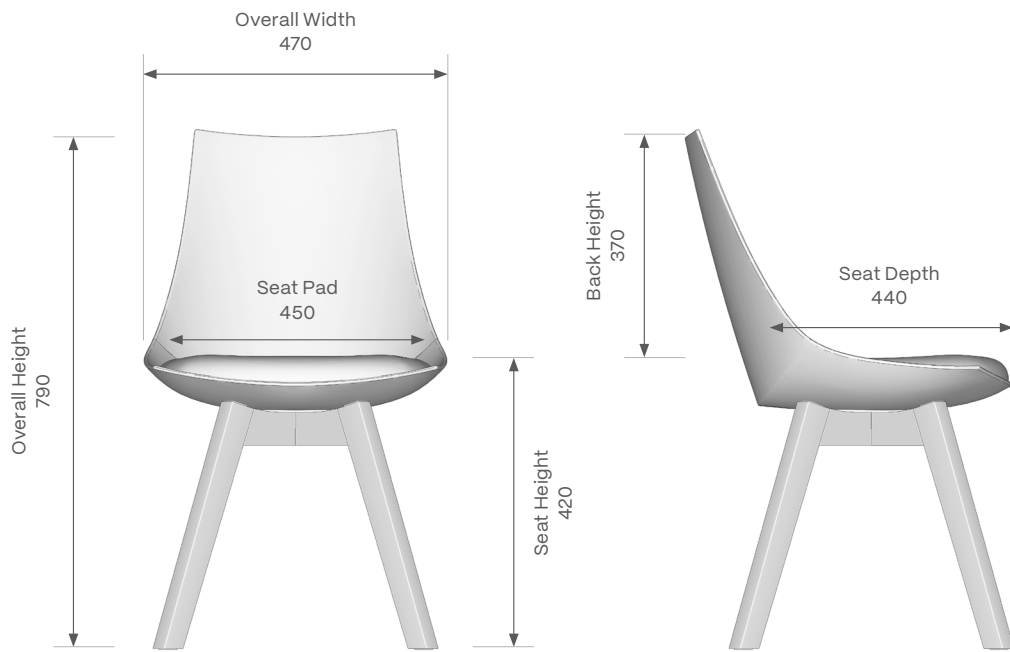
DIMENSIONS (MM)

| | |
|-----------|-----|
| Seat H | 420 |
| Seat W | 470 |
| Seat D | 440 |
| Seat Pad | 450 |
| Back H | 370 |
| Overall H | 790 |

OPTIONAL UPGRADES

Custom Fabric 0.6m required

DIMENSIONS (MM)



Smarter Workspaces

NEW PLYMOUTH
Head Office/Showroom
59 Rimu Street
New Plymouth 4312

AUCKLAND
Showroom
Appointment only

0800 143 143
info@knightgroup.co.nz