

# Knight®

Product Details

Vision



# Vision



## FEATURES

- Big, strong chair for all your visitors
- Double layer comfort zone cushioning
- Stackable to 4 high (excluding arms)
- Fully-welded frame
- Optional radius style armrests

The Vision combines contemporary style with lasting comfort, making it a standout choice for meeting rooms, conferences, and reception areas. With generous cushioning, a strong fully-welded frame, and the option of arms, it adapts easily to different settings. Stackable, the Vision is practical, durable, and designed to welcome guests with ease.



## FINISHES

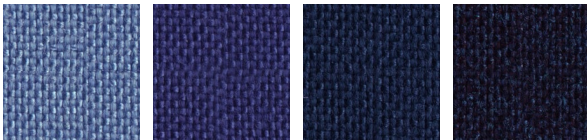
### FRAME



BLACK

SILVER

### CROWN



FRESHWATER

ELECTRIC

INDIGO

MIDNIGHT



RIVERSTONE

GALAXY

EBONY

### BREATHE

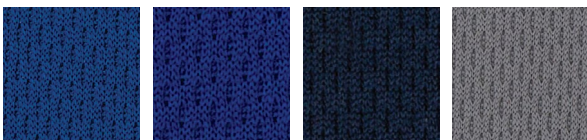


TOMATO RED

LIME GREEN

FERN GREEN

BABY BLUE

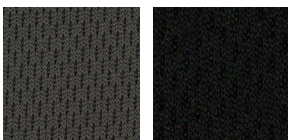


SKY BLUE

ROYAL BLUE

NAVY

ALLOY GREY

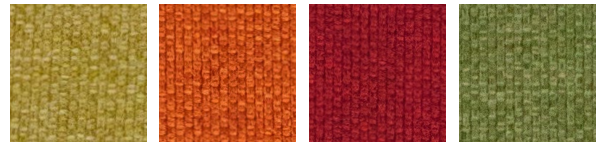


SLATE GREY

BLACK

Please note that the warranty does not apply to fabric, mesh & textiles.

### SPLICE



YELLOW

ORANGE

RED

GREEN

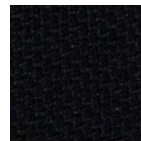


LAGOON

BLUE

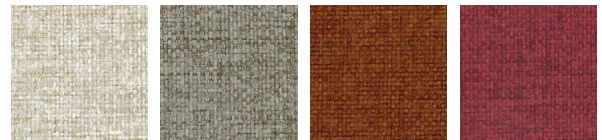
GREY

CHARCOAL



BLACK

### REEF

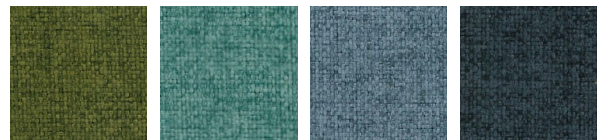


NATURAL

WALNUT

FENNEL SEED

RED



PALM

EGG BLUE

BLUE

STEEL BLUE

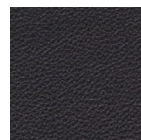


GREY MIST

PEWTER

BLACK

### PU



BLACK

## DIMENSIONS (MM)

Seat H	460
Seat W	460
Seat D	470
Back H	370
Overall H	850

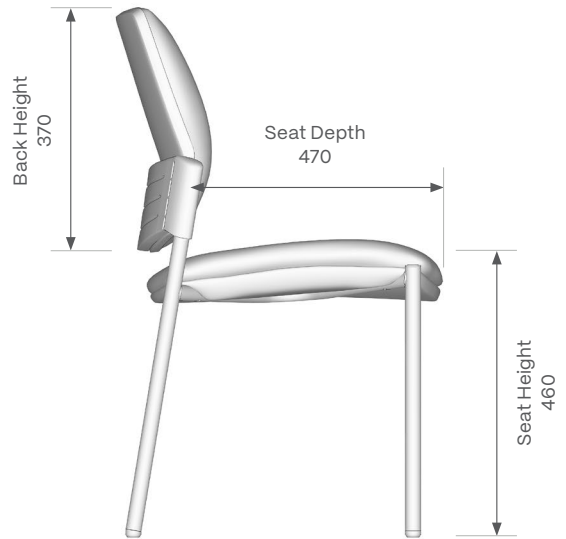
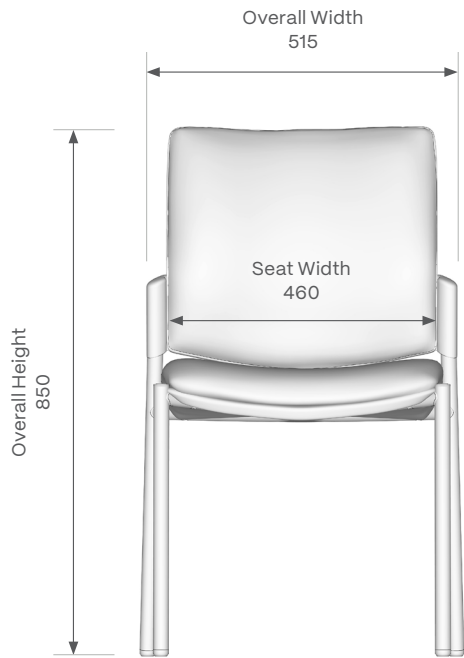
## OPTIONAL UPGRADES

Radius Armrests

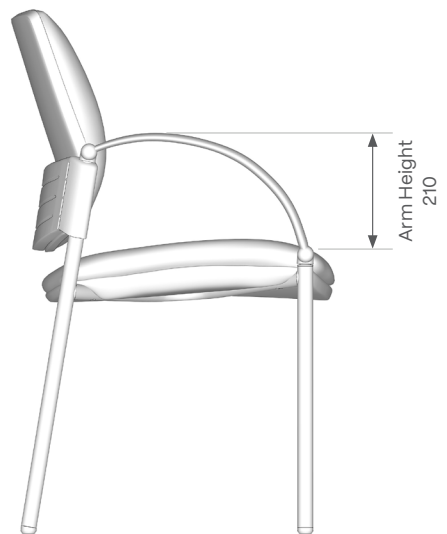
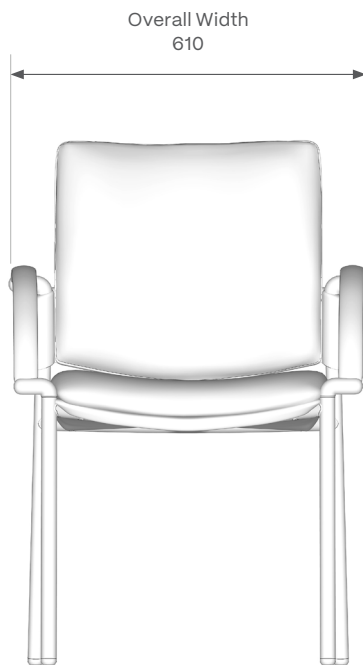
Custom Fabric 0.7m required

**DIMENSIONS (MM)**

**WITHOUT ARMS**



**WITH ARMS**



# Smarter Workspaces

**NEW PLYMOUTH**  
Head Office/Showroom  
59 Rimu Street  
New Plymouth 4312

**AUCKLAND**  
Showroom  
Appointment only

0800 143 143  
[info@knightgroup.co.nz](mailto:info@knightgroup.co.nz)